

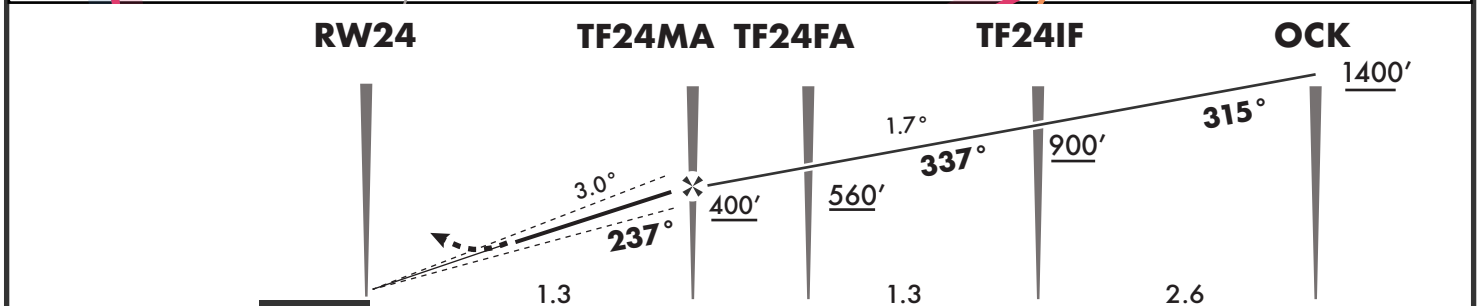
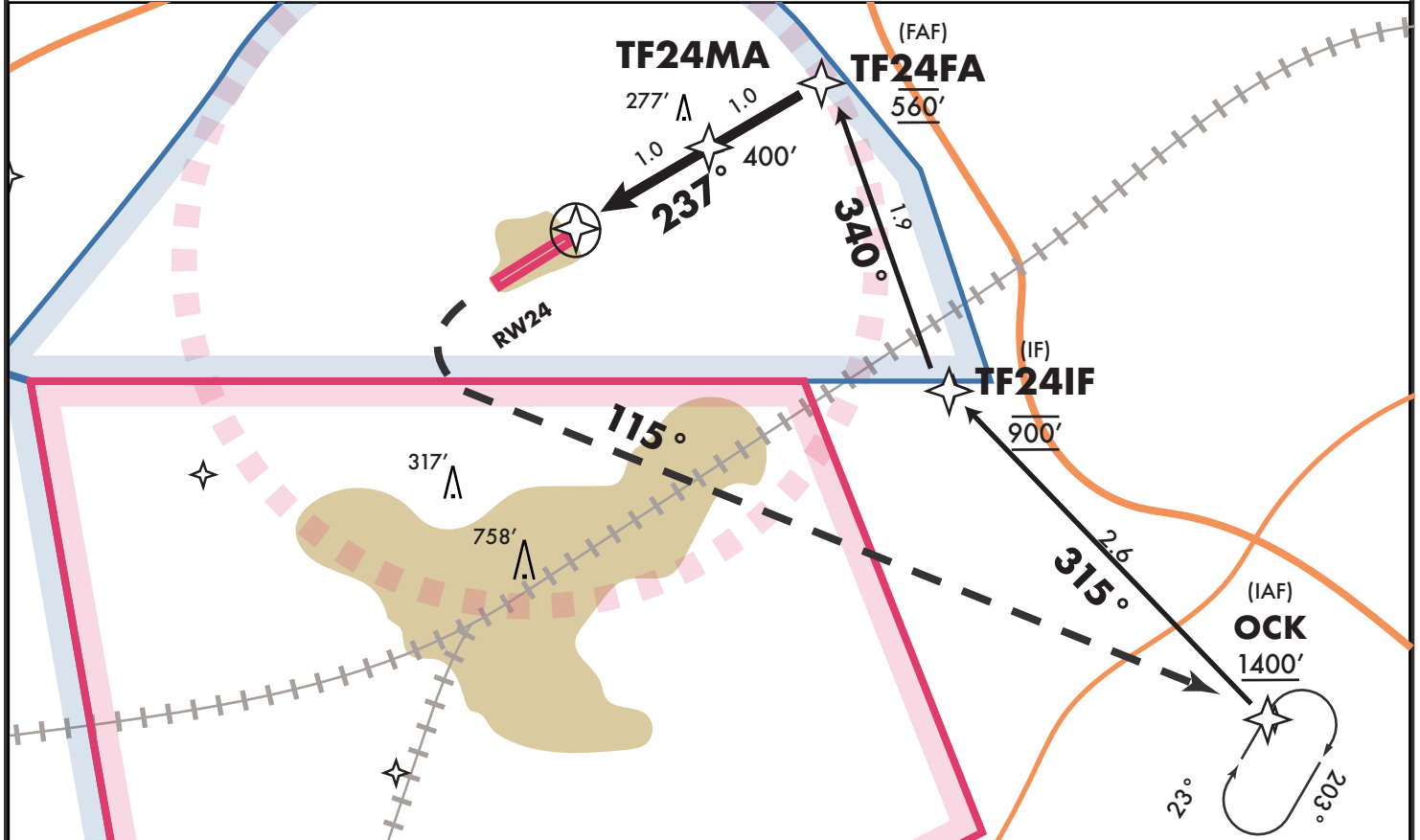
EGTF Fairoaks

April 2024

FAIROAKS, UK VISUAL Rwy 24Z

FARNBOROUGH App 134.355, 125.250	HEATHROW Radar 125.625	FAIROAKS Info 123.430	2200'
Final apch crs 237°	DA(H) 400' (320')	Apt Elev 80' Rwy 76'	
MISSED APCH: Turn LEFT (MAX 120 KT) as soon as possible to OCK climbing to 1400' on 115° radial and enter Hold South East of OCK on the 23° radial or as advised by Farnborough App			

- Alt Set: hPA Trans level: By ATC Trans Alt: 6000'
1. Establish MAX 110kt ground speed by OCK
 2. Final Visual Leg and APR activated after TF24FA
 3. 3° slope on TF24MA by 1.0 nm at 400'
 4. Enter VNAV for OCK, TF24IF, TF24MA
 5. Must be practiced in VMC within 30 days



Gnd speed-Kts	70	80	90	100	110	120	For APAPI 4° TF24IF 1000' TF24FA 500'	Gnd speed 110 Kts MAX	1400' OCK ←
Descent Angle 3.0°	372	425	478	531	584	637			

DA(H) 400' (320') Fairoaks LFA SVFR Requirement: Vis 3000m Surface in Sight by TF24IF Ceiling 600'	LANDING RW24 ONLY <div style="border: 2px solid red; padding: 5px; color: red; font-weight: bold;"> NOT OFFICIAL Use at your own discretion </div>
--	--